



GREAT PARK PROJECTS MONTHLY STATUS REPORT JUNE 2026

CONSTRUCTION PROJECTS

1. NORTHERN SECTOR DEMOLITION OF BUILDING FOUNDATIONS, UTILITIES, AND TARMAC REMOVAL (PHASE 2)



The Northern Sector project is the next phase of demolition at the ARDA site near Cadence and Pusan Way. This work will complete the removal of all abandoned infrastructure, including building foundations, underground utilities, and

other base-era infrastructure required to prepare for the development of the Perimeter Park and Northern Sector. Work commenced in June 2025 and is anticipated to be completed by spring 2027.

UPDATE

This past month, a nesting bird survey was conducted identifying active nesting activity within the project limits and has delayed the start of construction by approximately one month. This coming month, our contractor will continue to prepare for construction by submitting the required pre-construction documents, environmental notices, and construction schedule.

2. BOSQUE ENHANCEMENT



The Bosque Enhancement project will renovate the existing Bosque landscaping between Cadence and Benchmark. Improvements include upgraded landscaping throughout the site, as well as a new

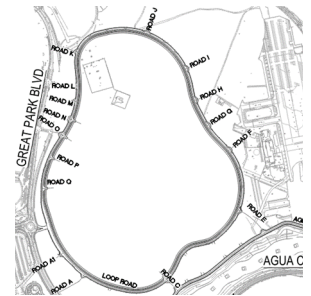
playground area for the community. Work commenced in February 2026 and is anticipated to be completed by winter 2026/27.

UPDATE

This past month, a total of 254 trees and 8,102 shrubs were planted in segment four of the five-segment project scope area. This coming month, we will continue to work on completing segment four.

3. HEART LOOP

The Heart Loop will surround and provide access to several of the most iconic features within the Heart of the Park, including the Lakes and the Amphitheater. It will offer nearly two miles of multi-use pathways for park visitors.



Thoughtfully designed with a focus on accessibility, the road will provide a safe and welcoming route for all users to enjoy and explore the park's central amenities. Work is anticipated to begin in **June** and is anticipated to be completed by **spring 2028**.

UPDATE

This past month, our contracting team began sending submittals to the City for review prior to beginning construction. This coming month, staff plans to issue the Construction Notice to Proceed.

CONSTRUCTION PROJECTS (CONTINUED)

4. OPERATIONS & MAINTENANCE FACILITY (OMF)



The Great Park Operations & Maintenance Facility (OMF) will be located at the southwest corner of Great Park Boulevard and Skyhawk. It will include a +/-7,500-square-foot administration building and an outdoor yard for storage of

materials and equipment. Work commenced in April 2026 and is anticipated to be completed by spring 2027.

UPDATE

This past month, our contractor completed demolition and grubbing activities, established a temporary water line for ongoing softball field watering throughout construction, and commenced rough grading activities. This coming month, our contracting team will begin fine grading, site utility installation, and foundation construction activities.

5. HANGAR 10 — FOOD AND BEVERAGE HUB AT THE CANOPY RETAIL CENTER



Located in the Bosque area, the Hangar 10 site is part of a collaborative effort with Almqvist Development + Investment to construct Phase 2 of The Canopy retail center. This development features a newly improved Hangar 10 building that

reflects the character and history of the original site while introducing new retail and recreational spaces for the community. The project also includes the extension of Hornet Drive, connecting to The Canopy retail sites, along with the development of the Loop Road, a dedicated parking lot, and three additional

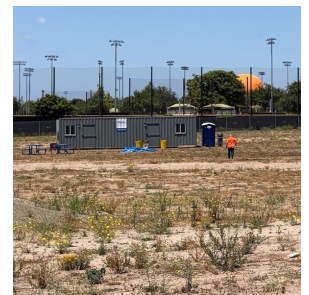
retail buildings, further enhancing commercial activity in the area. Work commenced in March 2026 and is anticipated to be completed by fall 2027.

UPDATE

This past month, progress continued with the demolition and mass grading work to prepare the site for the future retail center. This coming month, demolition will be completed, and mass grading will continue to shape the site for future construction.

6. CULTURAL TERRACE PHASE 3 UTILITIES

The Cultural Terrace Phase 3 Utilities project includes installation of new underground site utilities that will support the planned and existing buildings at the Cultural Terrace. Project scope includes installing dry and wet utilities, EV charging and communication infrastructure, and placeholder conduits for future solar-powered security cameras. Work commenced in **May 2026** and is anticipated to be completed by spring 2027.



UPDATE

This past month, our contractor mobilized its trailer and equipment to the site, began utility agency coordination, established stormwater protection measures, and began potholing activities. This coming month, contractor will continue potholing activities and plans to begin sewer excavation and installation activities.

CONSTRUCTION PROJECTS (CONTINUED)

7. PARKING LOTS 6 & 7 CONNECTOR



The Parking Lots 6 & 7 Connector project will improve on-site circulation and connectivity by providing a connector between the existing two lots and a new entrance into Lot 7 from Marine Way. These improvements will enhance the existing configuration by eliminating the need for visitors to exit onto Marine

Way, or U-turn, when seeking additional parking options between the two lots. Parking Lots 6 and 7 are located along Marine Way between Ridge Valley and Skyhawk. Work is anticipated to begin in July 2026 and is anticipated to be completed by spring 2027.

UPDATE

This past month, staff continued the onboarding process for the awarded contracting team. This coming month, staff will issue the Administrative Notice to Proceed and begin collecting contractor submittals, such as the construction schedule and schedule of values.

DESIGN PROJECTS

8. PERIMETER PARK ROUGH GRADE



The Perimeter Park Rough Grade effort will create a berm buffering the adjacent Great Park neighborhoods from the activation of the Great Park. Project scope

includes earthwork, installation of site drainage systems, and revisions to existing utilities.

The project will include earthwork (cut and fill), installation of site drainage systems, and adjustment of existing utilities to final grade. This rough grading effort will create a berm buffering the adjacent neighborhoods from the Northern Sector.

Design Phase: Fall 2024–Spring 2026
Anticipated Construction: Summer 2026

9. PERIMETER PARK LANDSCAPE IMPROVEMENTS

The Perimeter Park Landscape Improvements project will include landscape and park improvements along nearly one mile of Cadence. Improvements include new tree plantings, enhanced pedestrian pathways, and creation of a passive open space.



Design Phase: Fall 2024–Summer 2026
Anticipated Construction: Fall 2026

10. BUILDING 369 RENOVATION (AVIATOR HALL)

The Building 369 Project (facility to be renamed “Aviator Hall”) is an adaptive reuse of an existing 30,000-square-foot base-era structure at the center of the Cultural Terrace. Building 369 will serve as the city’s



DESIGN PROJECTS (CONTINUED)

preeminent event center and will be one of the largest standalone flexible indoor event spaces in Orange County. Other planned amenities include open and play spaces and lawn areas. This project was released to bid with construction bids due at the end of May 2026.

Design Phase: Winter 2024/25–Winter 2025/26
Anticipated Construction: Summer 2026

11. BOSQUE BRIDGE

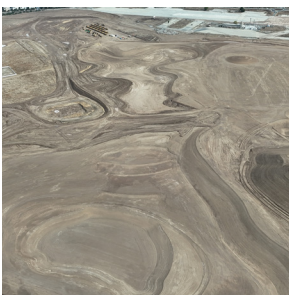


The Great Park Pedestrian Bridge program establishes a cohesive network of pedestrian and bicycle crossings, with consistent architectural features adapted to

different areas of the park. The first implementation of this network will be at the Bosque to provide a direct, grade-separated connection between the Bosque Trail network and The Canopy and Hangar 10 sites. This project was released to bid with construction bids due at the end of May 2026.

Design Phase: Spring 2024–Winter 2025/26
Anticipated Construction: Summer 2026

12. THE LAKES



Located in the Heart of the Park, a multi-level, 22-acre lake is being designed as both a community amenity and a public gathering space. The lakes will support stormwater quality treatment, provide irrigation water for common landscaped areas, and create

a natural habitat for local flora and fauna. The Great Park Lakes project will also serve as a scenic backdrop for the amphitheater and ceremonial terrace.

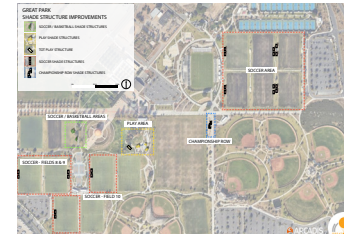
Design Phase: Winter 2024/25–Fall 2026*
Anticipated Construction: Winter 2026/27

** This date represents project phasing with The Lakes Phase 1 (Pipelines) construction starting in fall 2026. Phases 2 (Lake Bowls) and 3 (Pump Stations) will*

complete design in winter 2026 and begin construction in early 2027, with an anticipated duration of two years.

13. SHADE STRUCTURE IMPROVEMENT PHASE 2

The Great Park Shade Structure Improvement Phase 2 project will install 30 additional shade structures around various seating areas and sports fields. These structures will be adjacent to soccer fields, play areas, and championship row.



Design Phase: Winter 2024/25–Spring 2026
Anticipated Construction: Summer 2026

14. THE HEART OF THE PARK AMENITIES

Located in the Heart of the Park, the lakeside area features a variety of thoughtfully designed amenities. These include a ceremonial terrace, shaded picnic groves, and open lawns for casual recreation.



Surrounding wetland gardens use native plants for eco-friendly water filtration and offer educational insights into stormwater management and sustainability. Additional features include seating areas integrated into the landscape for relaxation and community use, educational signage highlighting water conservation and the site's history, and art installations celebrating the area's aviation and agricultural heritage.

Design Phase: 2024–Winter 2027/28
Anticipated Construction: Spring 2028

15. THE GREAT MEADOW

The Great Meadow will be an iconic and key Great Park destination for families to gather, relax, play, and connect. This area of the park will include event spaces, walking and cycling trails, seating areas, a rotunda, and an aerial bridge system to enhance

DESIGN PROJECTS (CONTINUED)



connectivity for a unique pedestrian experience. Additional amenities will include picnic areas, bird and forest gardens, memorial gardens, a bandshell, and themed playgrounds to create a diverse and engaging environment that supports

recreation, relaxation, and community interaction.

Design Phase: Winter 2025–Fall 2027

Anticipated Construction: Winter 2029

16. GREAT PARK AMPHITHEATER



The Great Park Amphitheater, situated on approximately ten acres in the Heart of the Park, is a proposed 10,000-capacity performance venue offering a blend of fixed seating, lawn seating, premium seating areas, and food and beverage options. Its thoughtful design

not only enhances the concert-going experience but also supports year-round functionality. On nonperformance days, the space can be activated for a variety of events — such as corporate functions and

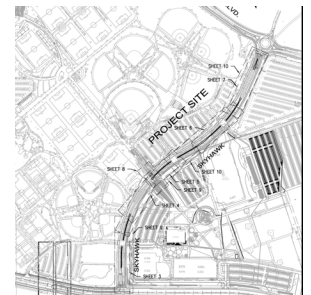
creative programming. The design also incorporates key sound mitigation strategies, including the strategic use of earthen berms, a recessed stage, and a calibrated house audio system, all aimed at minimizing sound pollution into surrounding communities.

Design Phase: Spring 2026

Anticipated Construction: 2028–2030

17. SKYHAWK MEDIAN IMPROVEMENTS

The Skyhawk Median Improvements project will construct a new raised median concrete curb and landscaping along Skyhawk between Marine Way and Great Park Boulevard in the Great Park. Scope will improve vehicle traffic flow in support of upcoming projects within the Cultural Terrace, creating dedicated turn pockets for queuing by restriping the roadway the entire length of Skyhawk within project limits and installing new signage.



Design Phase: Fall 2025–Summer 2026

Anticipated Construction: Spring 2027–Fall 2027

MAINTENANCE PROJECTS

18. FIFA PREPARATION



In preparation for the arrival of the United States Soccer team, the Great Park Maintenance team has been completing significant improvements to the soccer fields. Work has included the removal and replacement

of all sod on the stadium field and two additional training fields. Each field was laser-leveled and resodded to deliver a high-quality playing surface that meets FIFA performance standards.